



*Road Running Technical Council*  
*USA Track & Field*  
**Measurement Certificate**



Name of the course Upstate Classic Half Marathon 2021 Distance 21.0975 km  
Location (state) NY (city) Altamont  
Type of course: Road Race  
Measuring Methods: Bicycle  
Measured By Jim Gilmer, 232 Van Wies Point Rd, Glenmont, NY 12077  
Race Contact Josh Merlis, PO Box 38195, Albany, NY 12303  
Date(s) when course measured: 09/25/2020, 11/08/2021  
Number of measurements of entire course: 2 Course Configuration: Loop (1x)  
Elevation (meters above sea level) Start 132.20 Finish 132.20 Lowest 98.40 Highest 143.30  
Straight line distance between start and finish 0.0m Drop 0.00 m/km Separation 0.00 %  
Type of surface: Paved 97.2 % Dirt 2.8 % Gravel 0.0 % Grass 0.0 % Track 0.0 %  
Effective date of certification: November 15, 2021 Certification code: NY20006JG

Note to Race Director: Use this Certification Code  
in all public announcements relating to your race.

## *Be It Officially Noted That*

Based on examination of data provided by the above named measurer, the course described above and in the map attached is hereby certified as reasonably accurate in measurement according to the standards adopted by the Road Running Technical Council. If any changes are made to the course, this certification becomes void, and the course must then be recertified.

**Verification of Course** --- In the event a National Open Record is set on the course, or at the discretion of USA Track & Field, a verification measurement may be required to be performed by a member of the Road Running Technical Council. If such a remeasurement shows the course to be short, then all pending records will be rejected and the course certification will be cancelled.

***This certification expires on December 31 of the year:*** **2030**

**AS NATIONALLY CERTIFIED BY:**

Date: November 15, 2021

Jim Gilmer - USATF/RRTC Certifier - 232 Van Wies Point Rd, Glenmont NY 12077  
(518) 852-3562 - jim.gilmer@gmail.com

# Upstate Classic Half Marathon 2021

## Altamont, NY

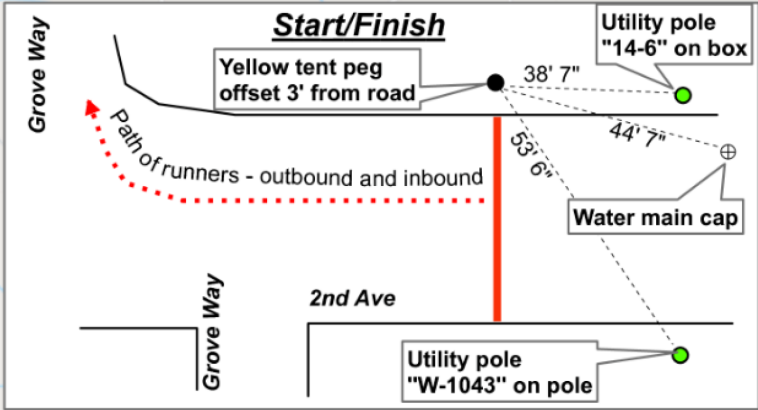
Note: This course modifies NY20003JG adjusting the location of the common Start/Finish.



**USATF Certificate**  
 NY20006JG  
 Effective: 11/15/2021  
 Through: 12/31/2030

See separate page for fairgrounds section

Start/Finish/Turnaround



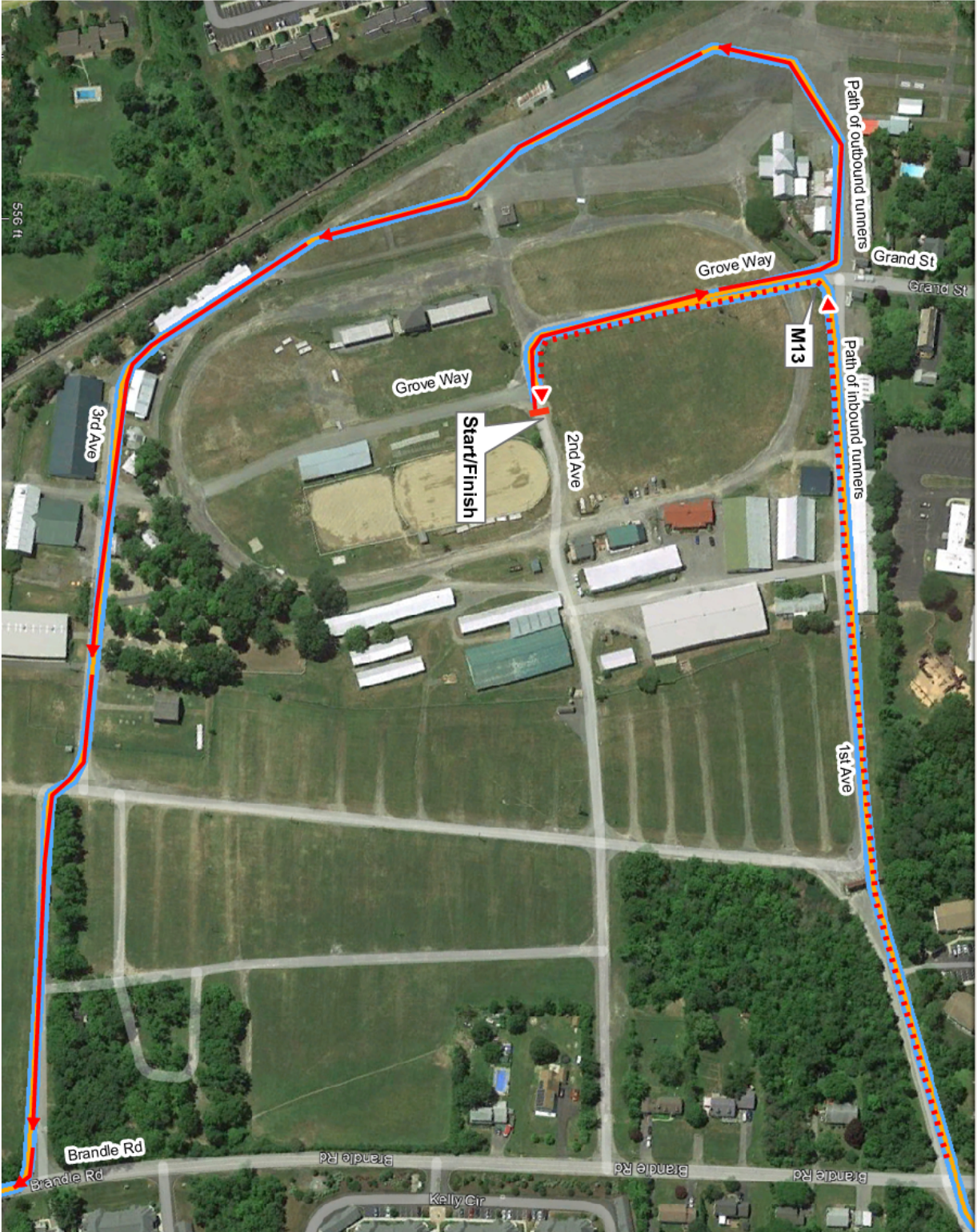
**SPR Statement:** Runners have full use of all roadways, except on Rte 156, Depot Rd and Rte 146 where they must keep left of the fog line against traffic.

**COURSE NARRATIVE**  
 Start at Altamont Fairgrounds in the harness track infield on 2nd Ave to R on Grove Way, then after exiting track L on 1st Ave to unnamed paved way around grass island, bearing L onto 3rd Ave and proceeding out Gate 3 to R on Brandle Rd to M1.  
 Continue to L onto Rte 156, keeping left of fog line, to M2, M3, 5 km, M4 and M5 to L on Tygert Rd, and bearing L at fork at onto Hennessey Rd to M6, 10 km and M7 to L on Depot Rd, keeping left of fog line, to M8. Continue to L on Meadowdale Rd to M9, 15 km, crossing Frederick Rd at junction onto Hawes Rd to M10 & M11, to L at Rte 146 to M12. Continue on Rte 146, keeping L of fog line, to L on Danvers Rd to 20 km, L on Arlington St continuing through Gate 1 ticket booths to fairgrounds entrance at 1st Ave to M13, L on Grove Way, L on 2nd Ave to Turnaround after Grove Way at Start line.

Measured & mapped by Jim Gilmer | USATF Final Signatory & World Athletics "A" Measurer | jim.gilmer@gmail.com



Altamont Fairgrounds Section of Course



<b>Split</b>	<b>GPS</b>	<b>Split colors: Miles 1-13 YELLOW; 5K-20K BLUE</b>
<b>Start Finish</b>	42.697586, -74.027028	In Altamont Fairgrounds on 2nd Ave slightly north of Junction with Grove Way. Line is marked by a yellow plastic tent peg flush to ground and offset 3' from 2nd Ave hard-packed dirt surface. Peg is 38' 7" ( <i>direct</i> ) from utility pole on west side of road, marked "14-6" on box; 44' 7" ( <i>direct</i> ) from water main cap in road; and 53' 6" ( <i>direct</i> ) from utility pole on east side of road marked "W-1043" on pole. ( <i>see map detail.</i> )
<b>Mile 1</b>	42.692183, -74.018765	On <b>Brandle Rd</b> at #181 Point is 15'9" before utility pole "NYT 23."
<b>Mile 2</b>	42.679989, -74.018597	On <b>Rte 156</b> across from #843 (Frederick Crouse House) after turn off Brandle Rd. Point is 63'7" after yellow culvert marker and 49'10" before driveway for #843.
<b>Mile 3</b>	42.669029, -74.006088	On <b>Rte 156</b> at #748. Point is 21' 2" before driveway with mailbox.
<b>5 km</b>	42.667731, -74.004949	On <b>Rte 156</b> at #725. Point is 55'9" before mailbox for #725.
<b>Mile 4</b>	42.658606, -73.993413	On <b>Rte 156</b> at #575. Point is 32'9" before mailbox for #575 and even with west side of blue house.
<b>Mile 5</b>	42.656026, -73.975128	On <b>Rte 158</b> before entrance to at Indian Ladder Farm. Point is 25' after "Ten Eyck Ln (Pvt)" sign and 14'8" before junction ahead (-) sign.
<b>Mile 6</b>	42.660806, -73.965020	On <b>Hennessey Rd</b> at #5412. Point is 2' before utility pole "NYT 6" on R and 21' after mailbox for #5412.
<b>10 km</b>	42.663598, -73.966590	On <b>Hennessey Rd</b> at #5451. Point is 94'6" after driveway at northeast corner of yellow house at top of hill.
<b>Mile 7</b>	42.672989, -73.965502	On <b>Hennessey Rd</b> at #101 (Black Creek Farm). Point is 155' before Glpps Ln sign.
<b>Mile 8</b>	42.686937, -73.964053	On <b>Depot Rd</b> near #5549. Point is 59'7" after "40 MPH" sign and 100' before driveway for #5949.
<b>Mile 9</b>	42.696891, -73.974810	On <b>Meadowdale Rd</b> at #1156. Point is 5'6" red hydrant across road and 24'7" after culvert.
<b>15 km</b>	42.696089, -73.980965	On <b>Meadowdale Rd</b> at #1124. Point is 59'6" before driveway for #1124 and 74' 9 " after "30 MPH" sign.
<b>X1-beg</b>	42.69332, -73.98842	<b>Meadowdale Rd</b> Begin Frederick Rd xing at Double Arrow sign. 76'6"
<b>X1-end</b>	42.69331, -73.98871	<b>Hawes Rd</b> End for Frederick Rd xing at Yield sign
<b>Mile 10</b>	42.694496, -73.992433	On <b>Hawes Rd</b> , no reference address available. Point is 37' 3" after culvert and 105'9" before utility pole "NYT 8". No other reference.
<b>Mile 11</b>	42.707501, -73.999164	On <b>Hawes Rd</b> at #6373 across from cemetery. Point is 31'9" before driveway.
<b>Mile 12</b>	42.706086, -74.014572	On <b>Rte 146</b> at #756. Point is 32' 6" before mailbox.
<b>20 km</b>	42.703191, -74.021111	On <b>Danvers Rd</b> at #19. Point is even with utility pole "NG 278-5.
<b>Mile 13</b>	42.698732, -74.028120	At main gate to <b>Harnass Track</b> .